

# Antenna

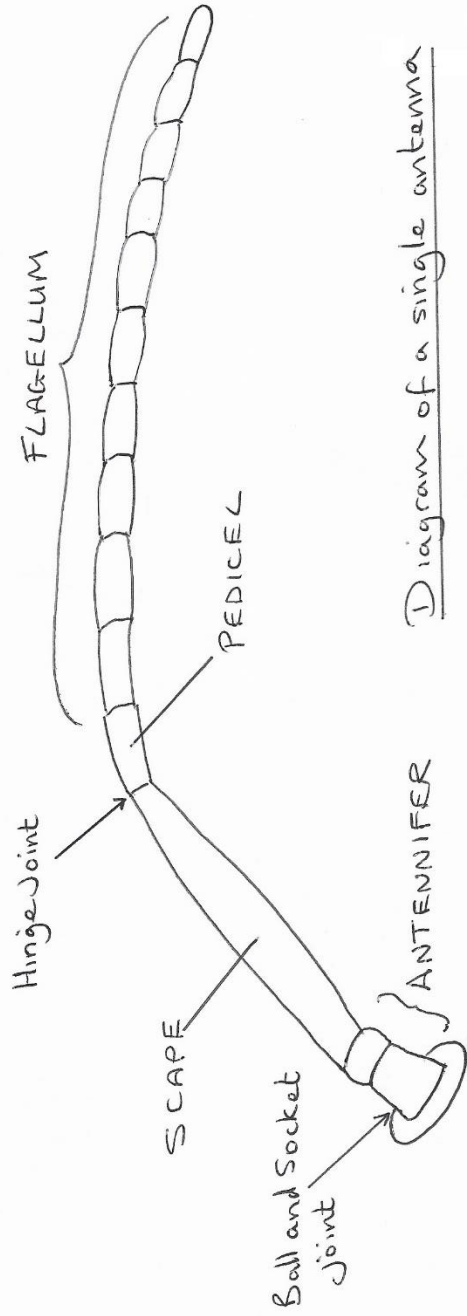
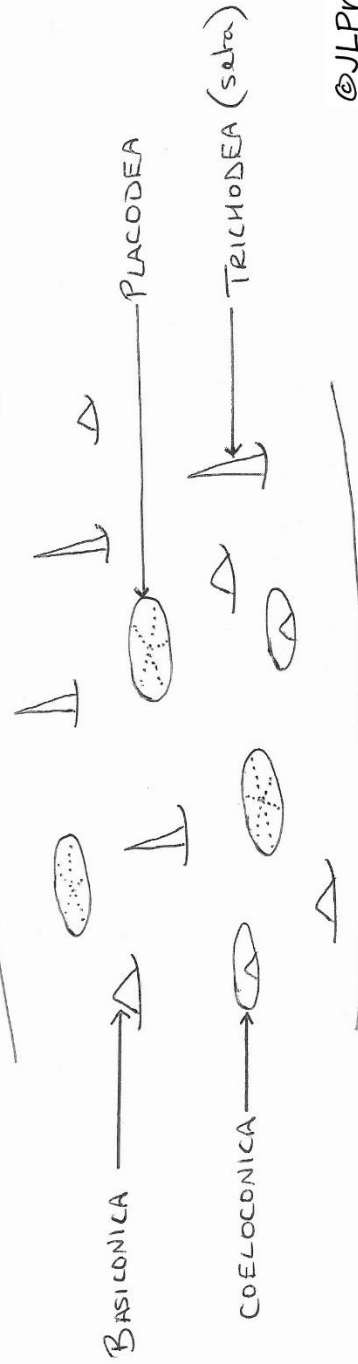


Diagram of a single antenna

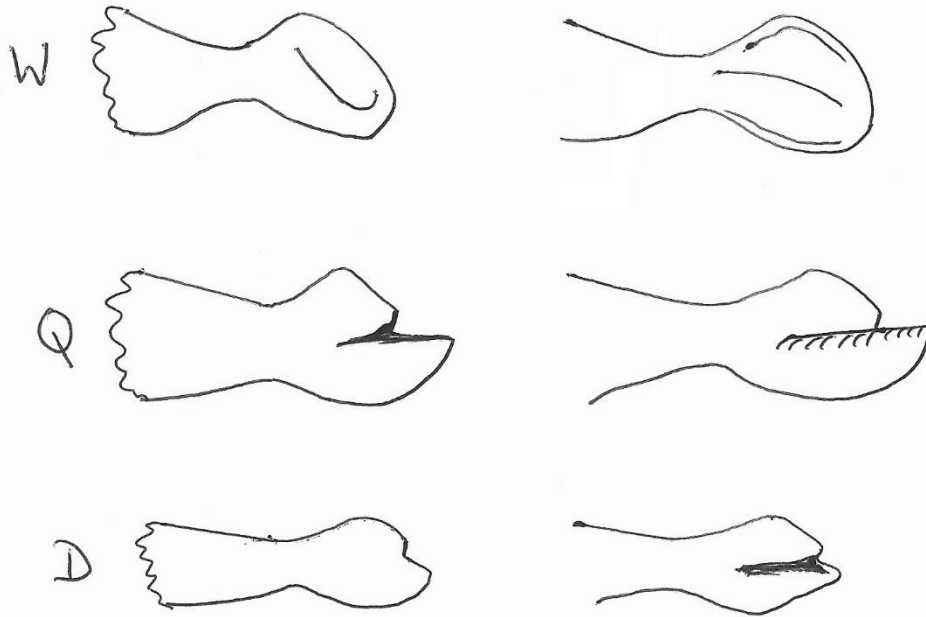
©JLPreece

Schematic view of the surface of the antenna



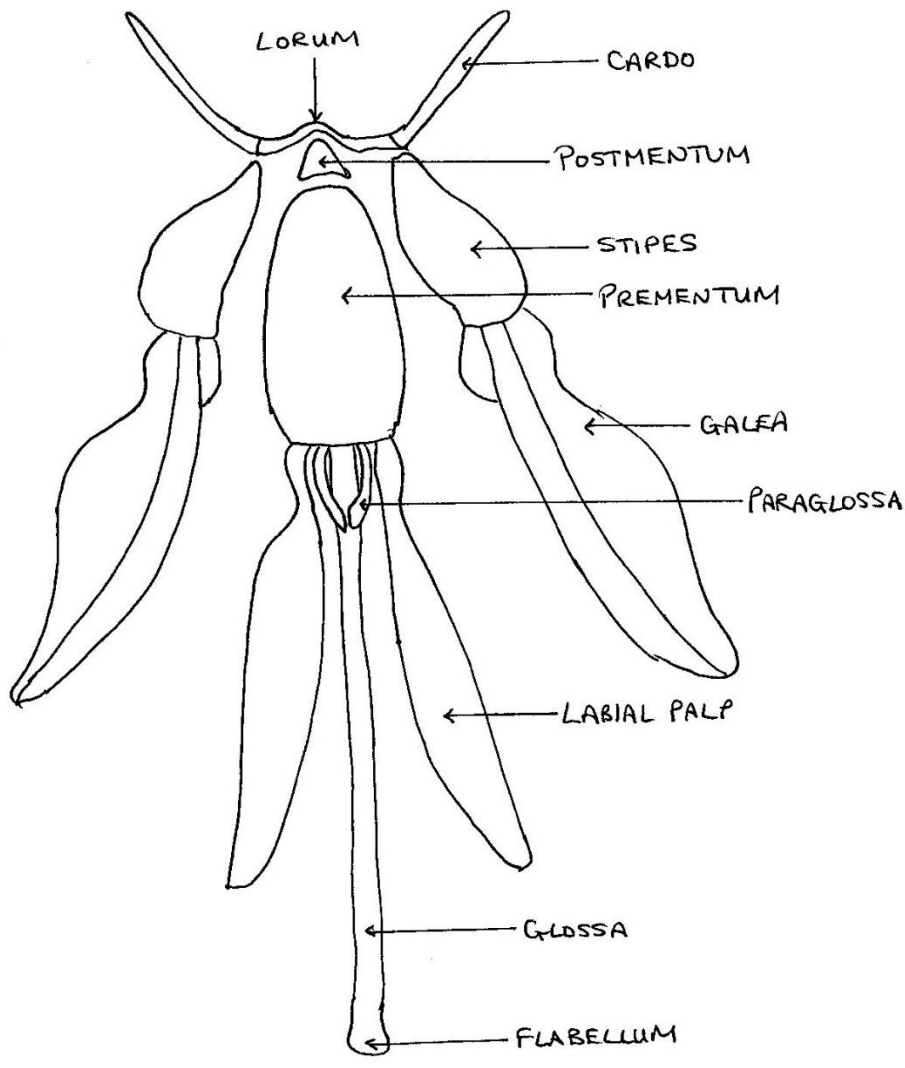
©JLPreece

## Mouthparts



Basic outline of Mandibles  
of Worker, Queen and Drone

©JLPreece

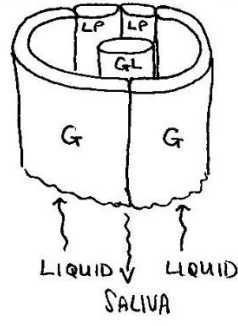


SCHEMATIC DIAGRAM OF HONEYBEE MOUTHPARTS

©JLPreece

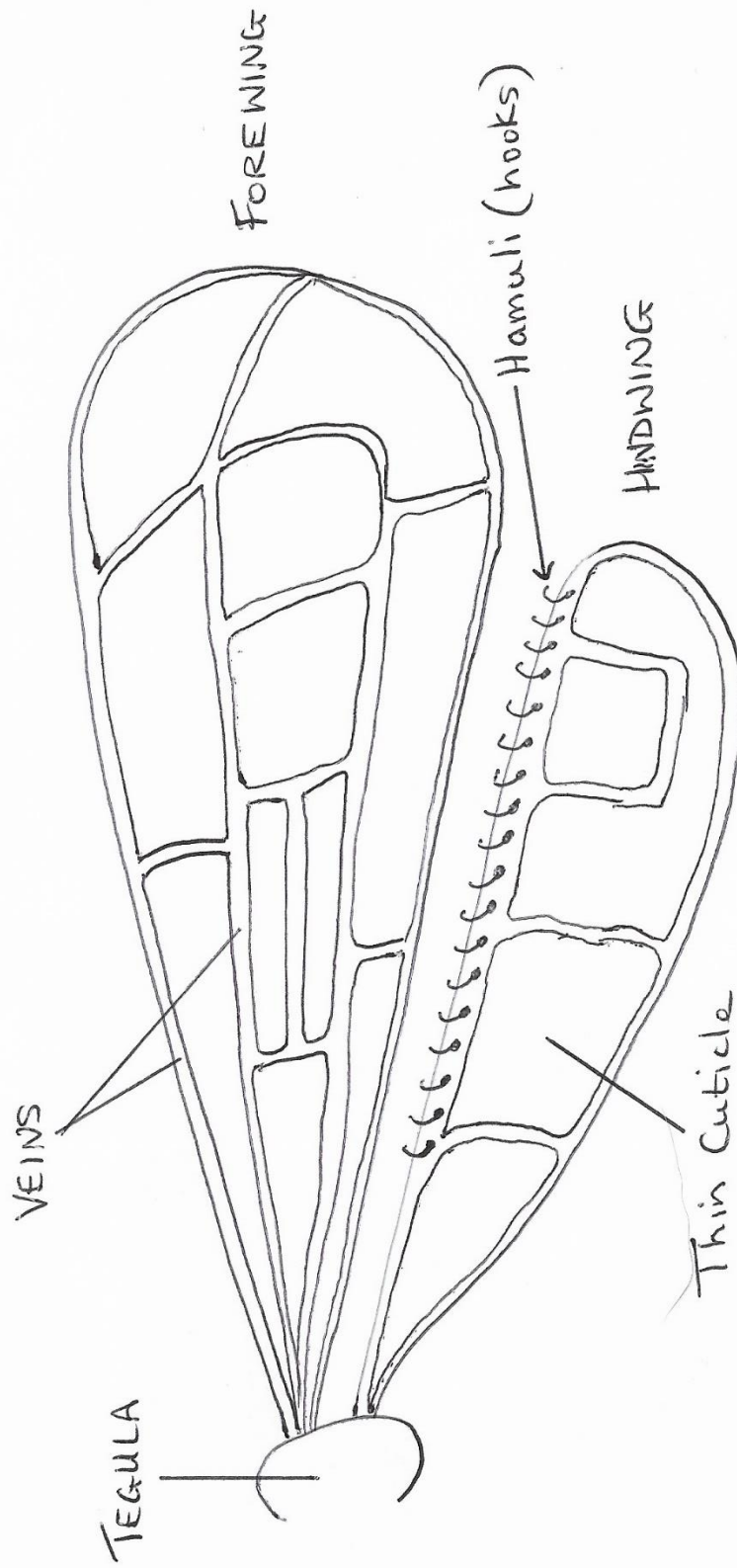
SCHEMATIC OF MOUTHPARTS FORMING FEEDING TUBE

G = GALEA  
 GL = GLOSSA  
 LP = LABIAL PALPS



©JLPreece

# Wings

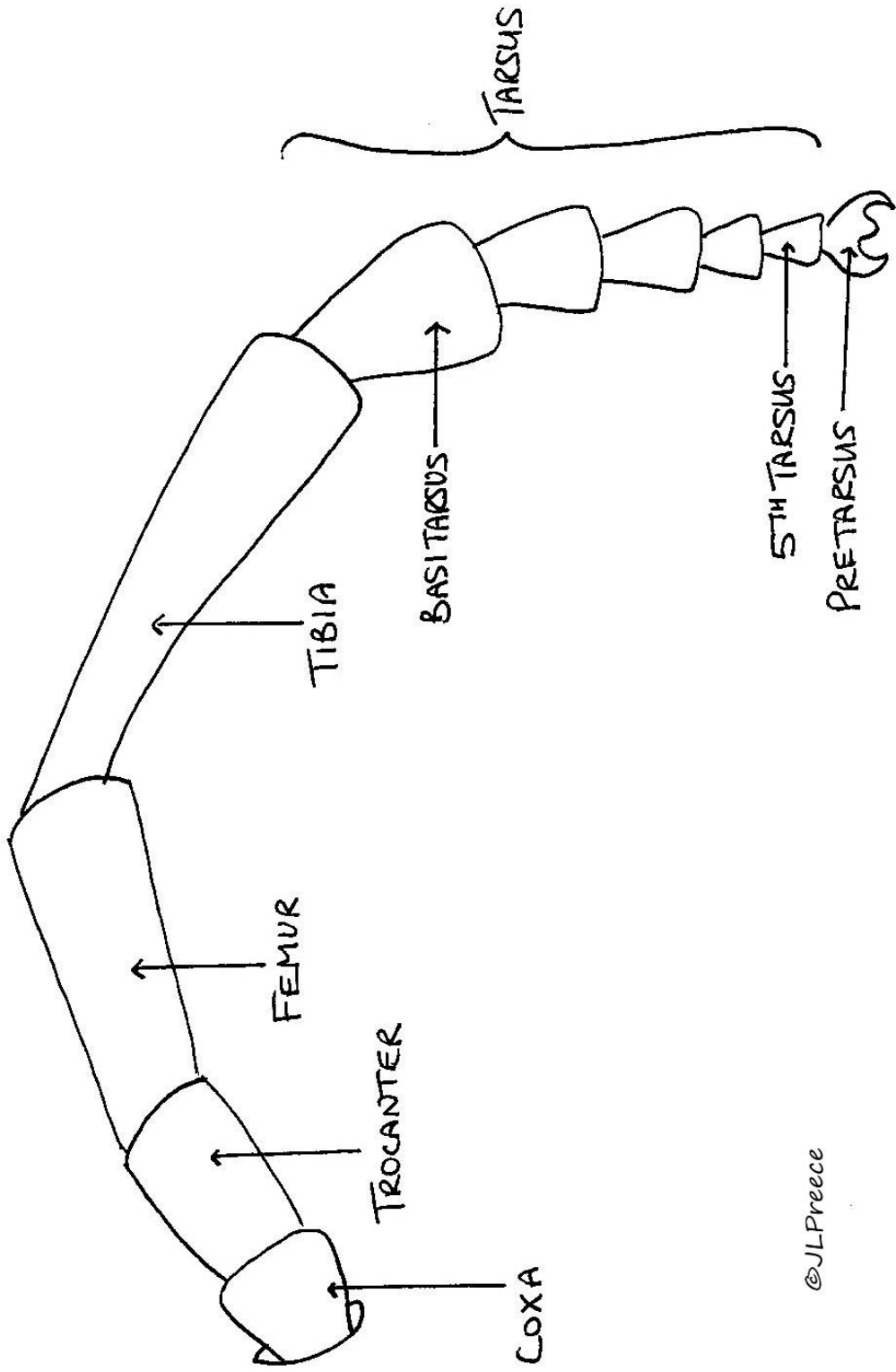


@JLPreece

Schematic Diagram of the Wings

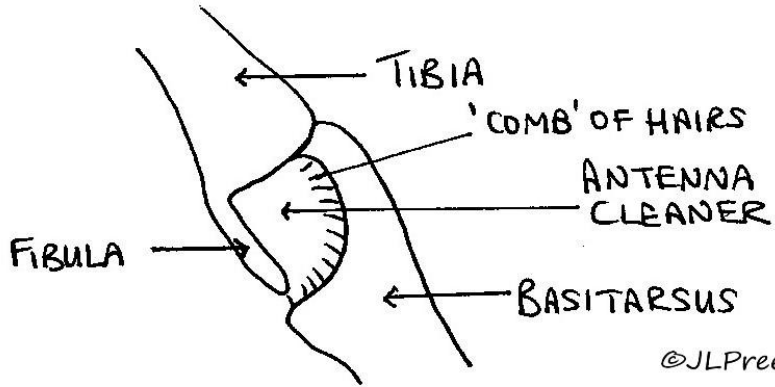
# Legs

## General Structure of Honeybee Leg



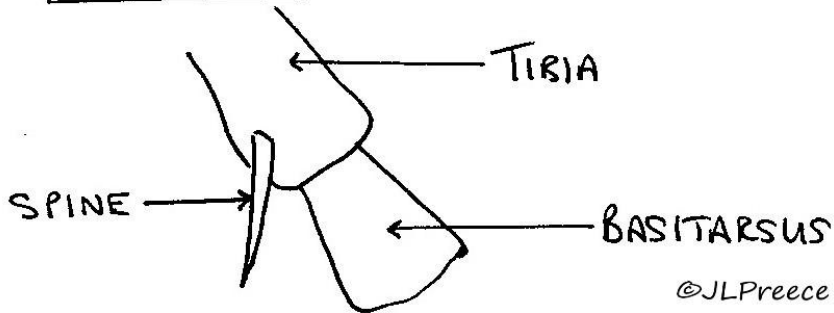
@JLPreece

FORELEG



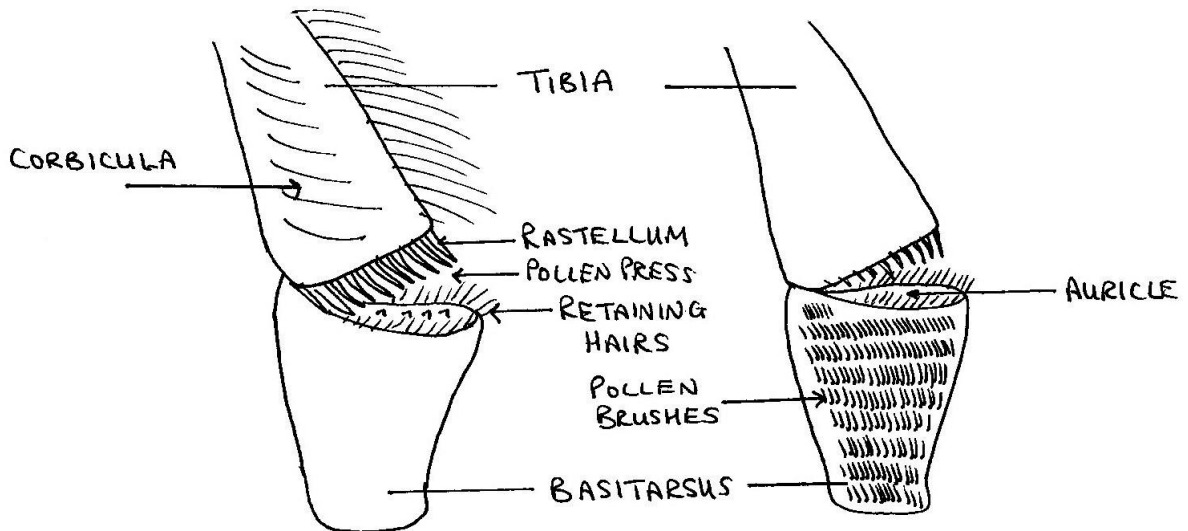
©JLPreece

MIDDLE LEG



©JLPreece

HIND LEG



OUTER SURFACE

INNER SURFACE

©JLPreece